

# Info-Scan Fact Sheet

Info-Scan is a real-time distributed database software system designed for HVAC direct digital control, building automation, supervisory control and data acquisition (SCADA), and enterprise-wide monitoring and control of facilities. It's key features include:

## Capacity of 100,000 points (field sensors/controls)

- Expandable for future growth
- Critical process data when you need it
- Embedded Oracle database reliability
- Fast system response, typically less than 10 seconds



## Industry Standard Components and Architecture

- Operates on Personal Computer hardware and software
- Microsoft Windows based for quick system navigation

## Wide Range of Platforms Fit Any Size System

- Operates on single-user PCs or multiple networked systems
- All Info-Scan software is included with every system, regardless of size



## Remote Access via Internet, VPN or Dialup Connections

- Access your system from nearly anywhere
- Supports multiple operator workstations on local network
- Supports digital subscriber line (DSL) and VPN connections
- Radio frequency (RF) or leased line modem support



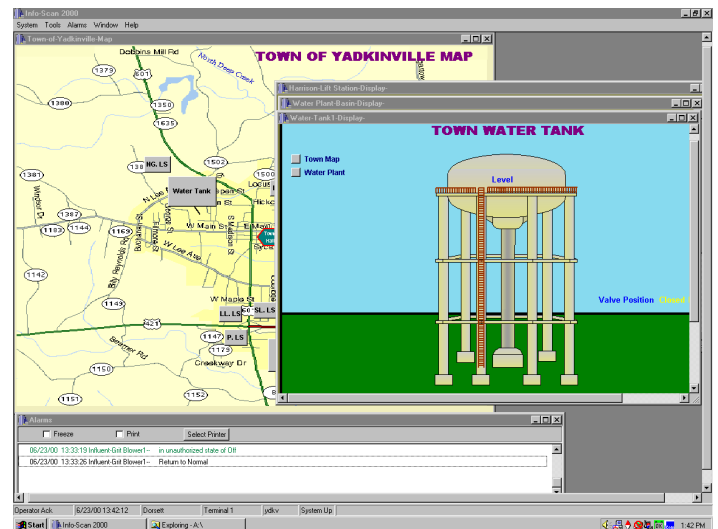
## Industry Standard Input/Output Compatibility

- Use existing instrumentation to minimize costs
- Accepts 4-20 ma, 0-20 ma, 0-5 vdc, 0-10 vdc, and RTD analog input signals
- Control outputs are 24 VAC digital (on-off), 4-20 ma, 0-5 vdc, and 0-10 vdc analog



## Robust and Flexible Graphic System

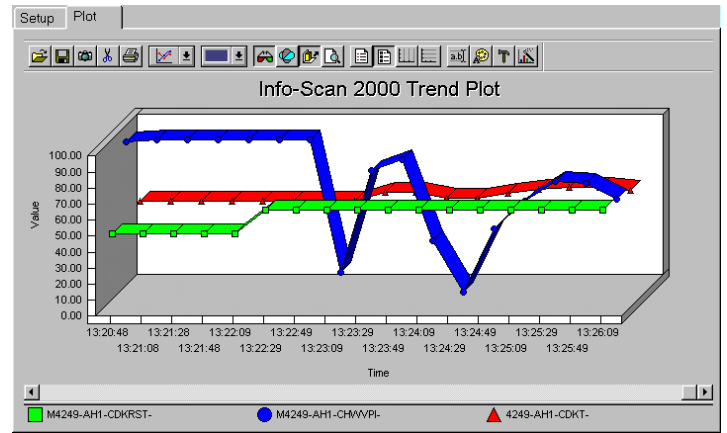
- Use your favorite graphics package if desired
- Optionally use Info-Scan and Visio pre-drawn templates and stencils
- Import photos, P&I drawings or other process data



TimeStamp	Operator	Point	Log
09/27/00 11:03:57	cmf	UNI-High-Script-PgmPt	Program Request Changed from 0 to 1
09/27/00 11:03:58	Randy	25910-Charge-Script-	Script edited
09/27/00 11:04:02	Randy	25910-MID01-	Configure Device Changed from False to True
09/27/00 11:04:25	cmf	UNI-Low-Script-PgmPt	Program Request Changed from 0 to 1
09/27/00 11:06:39	cmf	UNI-High-Script-PgmPt	Program Request Changed from 0 to 1
09/27/00 11:07:28	cmf	UNI-MidRange-Script-PgmPt	Program Request Changed from 0 to 1
09/27/00 11:08:54	Randy	25910-CWS-CanCharge-	Commanded to Yes using priority level 16
09/27/00 11:09:20	Randy	25910-CWS-System-	Commanded to On using priority level 16
09/27/00 11:28:04	Randy	25910-CWS-TankLevel-	Low Limit Changed from 98.0000 to 90.0000
09/27/00 11:39:26	Randy	25910-CWS-ChargeLevel-	Commanded to 66.0000 using priority level 16
09/27/00 11:39:41	Randy	25910-CWS-TankLevel-	Low Limit Changed from 90.0000 to 98.0000
09/27/00 11:39:50	Randy	25910-CWS-System-	Commanded to On using priority level 16
09/27/00 11:41:41	Randy	25910-CWS-CanCharge-	Commanded to Yes using priority level 16
09/27/00 11:44:57	Randy	25910-CWS-TankLevel-	Low Limit Changed from 98.0000 to 90.0000

### Operator Log System

- Operator's actions are logged to a secure file
- Chronologically trace operator actions for analysis and training
- Learn from and use as training aids for new operators
- Increase operator accountability and responsibility



### Real-time Data Graphical Trending System

- Create visual graphs tracking up to 16 individual process values
- Choose from formats including 3-D, pie, bar, line, x-y, etc.
- Trend historical data to analyze system disturbances
- Print trends for training and simulated "what-if" scenarios

Notify Group Edit

Notify Group

Notify: [ ] Group: [ ]

Activation: [ ] Description: [ ]

Time Active: Start Time [ 3:33:00 AM ], Stop Time [ 10:05:00 PM ]

Days Active:  Monday,  Holiday,  Tuesday,  Wednesday,  Thursday,  Friday,  Saturday,  Sunday

Members:

Operator Name	Paging Delay
user1	0
fred	0
admin	0
cmf	0
fred	0
JPU	0
LMH	0
Randy	0

### Multi-Level Alarming System

- Automatic paging and forwarding if alarm is not acknowledged
- Assign routine, emergency, or critical alarm levels to each point
- Create manual or automatic procedures when alarms occur
- Create custom messages and alarm graphics
- Store the last 200,000 alarms for immediate review

Info-Scan 2000 Report  
Run-Time-Report

Point Name	Elapsed Active Time (hrs)
Birch-Pump1-Control-	3.19167
Birch-Pump1--	3.24111
Birch-Pump2-Control-	3.19778
Birch-Pump2--	3.23611
Decant-Pump1-Control-	20.6167
Decant-Pump1--	20.0067
Decant-Pump2-Control-	15.4603
Decant-Pump2--	15.4678
Effluent-Pump1-Control-	248.575
Effluent-Pump1--	248.606
Effluent-Pump2-Control-	122.668
Effluent-Pump2--	122.668
Effluent-Pump3-Control-	5.35000
Effluent-Pump3--	5.36611
Harrison-Pump1-Control-	0.00000
Harrison-Pump1--	0.00000
Harrison-Pump2-Control-	0.00000
Harrison-Pump2--	0.00000
Influent-Pump1-Control-	119.989
Influent-Pump1--	104.191
Influent-Pump2-Control-	193.753
Influent-Pump2--	117.409
Influent-Pump3-Control-	0.00000
Influent-Pump3--	5.68056
Lampighter-Pump1-Control-	181.962
Lampighter-Pump1--	182.039
Lampighter-Pump2-Control-	150.943
Lampighter-Pump2--	149.347
North Gate-Pump1-Control-	6.32611

Printed at 9/28/00 11:52:56 AM

### Equipment Maintenance Management Data

- Collect equipment run-time to schedule maintenance
- Monitor number of starts/stops and date/time they occur
- Profile equipment for operational management
- Monitor amperage to sense impending problems

### Flexible, Yet Robust Security Framework

- Security is built into each level of the system (up to 16 Levels)
- Prevent unauthorized access to displays, systems, or even points
- System manager determines the security settings

### Extensive Historical Data Collection & Reporting

- Collect and tabulate data from thousands of points
- Store data for days, months, or years
- Retrieve only the data you want using qualifiers
- Output formatted data for analysis or regulatory compliance or graph with spreadsheet programs

Info-Scan is easy to use, yet powerful. Flexible configurations ensure a proper fit to your needs. It delivers sophistication without complexity, and is perfectly suited for monitoring and controlling water/wastewater treatment processes, electrical power distribution, public utilities, and facility management.

## DORSETT TECHNOLOGIES

### Critical Systems Solutions

100 Woodlyn Drive • Yadkinville, NC 27055 • PH 800.331.7605 • FAX 336.679.8811  
Website: [www.dorsett-tech.com](http://www.dorsett-tech.com) • E-mail: [info@dorsett-tech.com](mailto:info@dorsett-tech.com)